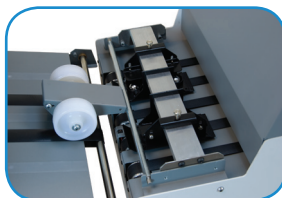
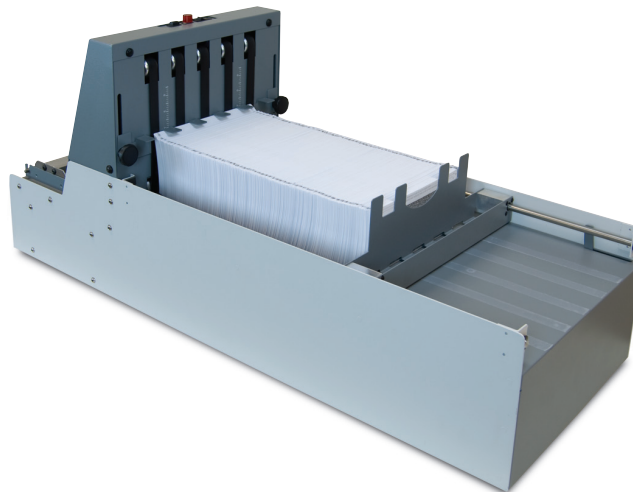
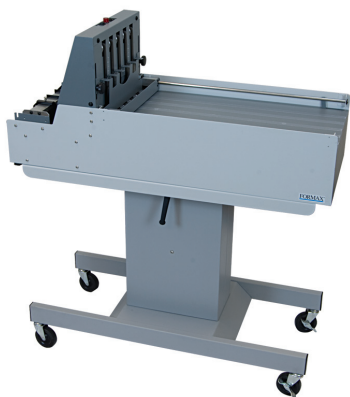


### Standard Features:

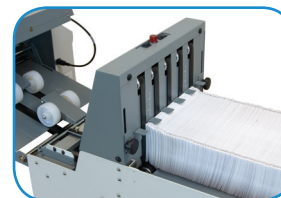
- Compatible with FD 2054, FD 2096 and 2200 Series AutoSeal, and FD 382, FD 38X Folders. Contact your Account Executive for additional machine compatibility.
- Neatly stacks up to 22 inches of folded documents
- Photo eye activation
- LED indicates when stacker is near full capacity
- Infeed features six-ball roller deck and two guide wheels to keep processed pieces feeding smoothly
- Run-out switch
- Vertical paper stop is adjustable to accommodate document sizes and fold types up to 7" H
- Spring-loaded horizontal paper stop extends as forms are loaded
- Interlock automatically stops the stacker and source machine when stacker is at full capacity (available for FD 38X, FD 2054, FD 2096 and 2200 Series)

### Options:

- V-Stack36-10: Adjustable-height stand with casters for mobility. Optional for tabletop folders and pressure sealers. Required for use with FD 2096 and 2200 Series.



Guide wheels and six-ball-roller deck ensure forms enter the stacker smoothly



Vertical paper stop adjusts to document sizes and fold types up to 7"

The V-Stack36 vertical stacker is designed to work with Formax high-capacity pressure sealers and tabletop folders. Unlike a traditional outfeed conveyor, it stacks forms vertically, providing a neat stack which is easier to unload for further processing.

With photo-eye activation, the V-Stack36 neatly stacks up to 22 inches of folded documents. The infeed features a six-ball-roller deck and two guide wheels to ensure forms enter the stacker smoothly, and an LED lamp which alerts operators when the stacker is near full capacity. Its vertical paper stop adjusts to accommodate document sizes up to 12" wide and fold types up to 7" high.

An interlock is available for FD 2054, FD 2096 and 2200 Series pressure sealers and FD 38X folders, which automatically stops the stacker and the source machine when the stacker is at full capacity.

The V-Stack36-10 height-adjustable stand with locking casters is available to align with a variety of inputs. The stand is optional for use with tabletop folders and pressure sealers, and required for use with production pressure sealers.

### Specifications:

Speed:	Variable, depending on input machine
Capacity:	Up to 22" of folded documents, approx. 1,500 sheets
Dimensions:	16" H x 37.25" W x 14.5" D
Folded Form Dimensions:	Up to 7" H x 12" W
Height with Adjustable Stand*:	41.5 to 45.5" (floor to top of stacker) 30" to 34" (floor to infeed deck)
Weight:	73 lbs (122 lbs with stand)
Power:	110V, 50/60 Hz
Made in USA	

Formax - New Hampshire, USA  
www.formax.com

Local Dealer:

## Sample Configurations

FD 38X Document Feeder and V-Stack36 Vertical Stacker, shown with optional V-Stack36-10 Adjustable Stand and cabinet.



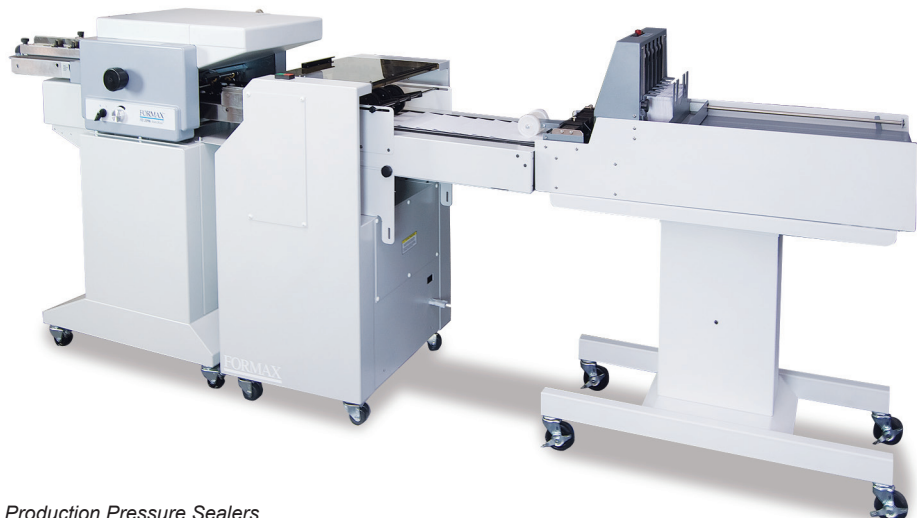
*Note: Stand is not required for use with Formax tabletop models. The V-Stack36 infeed is designed to align with the folder's outfeed on a tabletop or cabinet.*



FD 2054 Pressure Sealer and V-Stack36 Vertical Stacker, shown with optional V-Stack36-10 Adjustable Stand and cabinet.

*Note: Stand is not required for use with Formax tabletop models. The V-Stack36 infeed is designed to align with the sealer's outfeed on a tabletop or cabinet.*

FD 2096 Pressure Sealer, in-line with V-Stack36 Vertical Stacker and V-Stack36-10 Adjustable Stand.



*\* Stand is required to align V-Stack36 with Production Pressure Sealers. Stand is optional for tabletop folders and pressure sealers.*