

## E-MAIL CONNECTOR

STREAMLINES YOUR BUSINESS PROCESSES



### GO BEYOND SCAN TO E-MAIL...

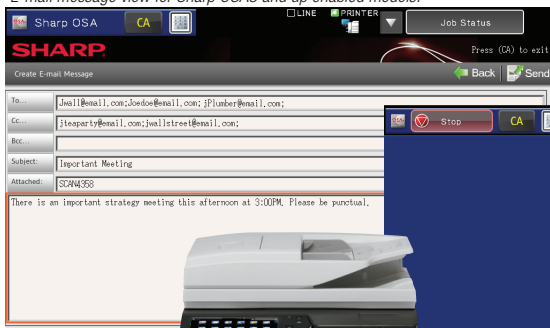
Take document scanning to the next level with the power and extensibility of Sharp OSA® technology. Using Sharp's E-Mail Connector, Sharp OSA enabled Multifunction Products (MFP) can now become an essential part of business processes in the organization.

Integrated with Microsoft® Exchange® Server, you can scan and send your mission critical document faster and in a more productive way with the Sharp E-Mail Connector.

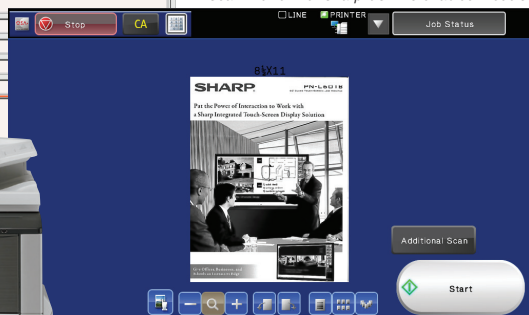
Each e-mail message created at the MFP is addressed from the sender's e-mail address, instead of an unknown MFP address, to help ensure secure and reliable delivery. A copy of the message will be stored in the authenticated users "Sent Items" folder for confirmation or auditing purposes. Authenticated users have access to key features available with Microsoft Outlook® from the MFP operation panel including Microsoft Outlook contacts as well as the global address lists. And for added convenience, the e-mail subject line and message body can be entered right from the MFP operation panel.

And now with the updated E-Mail Connector, you have exciting new features including an improved user interface and scanned image preview\*.

*E-mail message view for Sharp OSA3 and up enabled models.*



*Scan Preview for Sharp OSA4.0 enabled models.*



### PRODUCTIVE SCAN TO E-MAIL

Seamless integration with corporate e-mail is becoming more important for efficient communication. Sharp E-Mail Connector allows users to easily access to Microsoft Exchange address book and helps securely send mission critical document.

#### At-A-Glance

- Designed to work with Microsoft Exchange Server 2003, 2007 and 2010
- E-mail message is addressed from you and appears in "Sent Items" folder
- Access to Microsoft Outlook contacts and global address lists
- Supports To, Cc and Bcc e-mail fields
- Enter multiple recipients e-mail addresses, subject line and message body text right from the MFP (with OSA 3 and up enabled MFPs)
- Quick and Easy Set-up
- Requires user authentication to maintain network security
- Supports scanned file attachments up to 50 MB
- Supports a global e-mail signature

## SUPPORTED SHARP OSA-ENABLED MODELS:

Output Type	Sharp OSA-enabled Models	Sharp OSA Platform Version	Access to MS Exchange contacts and global addressbook	Multiple Receipts	Updated GUI	Scan Preview
Black & White	AR-M355/M455	2	✓			
	AR-M550/M620/M700	2	✓			
	MX-M283N/M363N/M453N/M503N	3.5	✓	✓	✓	
	MX-M350N/M450N	2	✓			
	MX-M550N/M620N/M700N	2	✓			
	MX-M623N/753N	3.5	✓	✓	✓	
	MX-M850/950/1100N	2	✓			
	MX-B401/B402/B402SC	3.5	✓	✓	✓	
Color	MX-2310U	2	✓			
	MX-2300N/2700N	2	✓			
	MX-2600N/3100N	3.5	✓	✓	✓	
	MX-2610N/3110N/3610N	4	✓	✓	✓	✓
	MX-3501N/4501N	2	✓			
	MX-4100N/4101N/5001N	3.5	✓	✓	✓	
	MX-4110N/4111N/5110N/5111N	4	✓	✓	✓	✓
	MX-5500N/6200N/7000N	2	✓			
	MX-6201N/7001N	2	✓			
	MX-C311/C401	3.5	✓	✓	✓	
	MX-C402SC	3.5	✓	✓	✓	✓



### WHAT IS SHARP OSA® TECHNOLOGY?

Sharp OSA technology is a software development platform for Sharp multifunction products (MFP). Utilizing industry standard web-service and .NET based technologies, Sharp OSA platform enables integrated and customized applications to add agility to your workplace.

Now the fourth generation Sharp OSA platform is Cloud ready, providing ultimate flexibility for corporation to implement business processes in the Cloud or local premises.

## SYSTEM REQUIREMENTS

### REQUIRED SHARP MFP ADDITIONAL EQUIPMENT

- MX-AMX2 / Sharp OSA Application Communication Module (ACM)

### MINIMUM SERVER HARDWARE REQUIREMENT

- Processor speed of 1.5 GHz or higher with at least 5GB free
- HDD space and 1GB available RAM

### MICROSOFT EXCHANGE SERVER REQUIREMENTS

- Microsoft Exchange Server 2003, 2007, and 2010
- Requires Microsoft Outlook Web Access for Microsoft Active Directory® users

### SUPPORTED SERVER OPERATING SYSTEM AND REQUIREMENTS

- Windows® XP Pro SP3 (IIS 5.1) (32-bit only)
- Windows Vista® Business, Enterprise, or Ultimate Edition SP2 or higher (IIS 7.0)
- Windows 2003 Server SP2 (IIS 6.0) (32-bit only)
- Windows 2008 Server, Windows 2008 R2 (IIS 7.5)
- Windows 7 Professional or Ultimate (IIS 7.5)
- Microsoft.NET Framework 2.0
- FTP Services (required for OSA version 2.0 only)
- Microsoft Internet Information Services (IIS)



### INTERESTED IN DEVELOPING A SHARP OSA APPLICATION?

Sharp extends Sharp OSA technology through the Sharp Partner Program. More innovative and advanced applications are available from program members. Sharp also encourages corporate customers and independent software vendors to take advantage of Sharp OSA technology. For more information, visit <http://www.sharp-partners.com>



E-Mail Connector is available through Sharp Authorized Integrator Program (AIP) Dealers. In addition to E-Mail Connector, more applications are available through AIP dealers to take your business process to the next level. Find AIP dealers near you with the dealer locator at [www.sharppusa.com](http://www.sharppusa.com)



SHARP ELECTRONICS CORPORATION  
Sharp Plaza, Mahwah, NJ 07495-1163  
1-800-BE-SHARP • [www.sharppusa.com](http://www.sharppusa.com)

Design and specifications subject to change without notice. Sharp, Sharp OSA and all related trademarks are trademarks or registered trademarks of Sharp Corporation and/or its affiliated companies. Microsoft, Windows, Windows Vista, Active Directory and Outlook are registered trademarks of Microsoft Corporation in the United States and/or other countries. Intel and Pentium are trademarks or registered trademarks of Intel Corporation or its subsidiaries in the United States and other countries. All other trademarks are the property of their respected holders.